

Joy Scarf

By Laura Zukaite

Yarnalia



LEVEL: Intermediate

SIZES:

One Size

FINISHED BUST:

5.5"/14 cm wide x 38"/96 cm long

MATERIALS:

Yarn A: Yarnalia JOY

(lace weight: 100% Baby Alpaca, 219yds/200m per 25 g), shown in Sweet Honey, 1 ball.

NEEDLES AND NOTIONS:

US size 9 (5.5 mm) needles OR SIZE NEEDED TO OBTAIN GAUGE

Tapestry needle

(NOTE: Gauge is not crucial for this project, but differences will affect the finished dimensions and required yardage.)

GAUGE:

24 sts x 20 rows = 4"/10cm in lace pattern

NOTES:

Body and sleeves are worked flat in pieces, then joined at the top to work the yoke in the round. There is a 1-st selvedge along each edge: slip the first and knit the last stitch of every row.

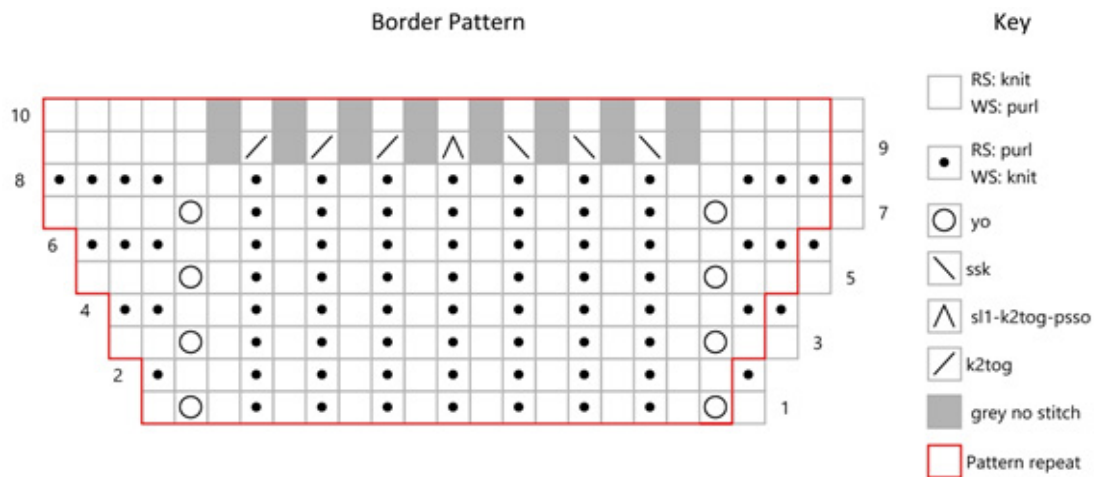
INSTRUCTIONS:

Border

CO 35 sts.

Work Rows 1-10 of Border Pattern Chart twice, working all rows as follows:

Sl1, work chart to last st working patt rep twice, k1. 20 rows total.



Written Instructions:

NOTE: Selvedge sts are not shown on chart but are included in the directions and counts below.

Row 1 (RS): Sl1, k1, *yo, [k1, p1] x7, k1, yo, k1; rep from * to last st, k1. 39 sts

Row 2 (WS): Sl1, *k1, p2, [k1, p1] x7, p1; rep from * to last 2 sts, k2.

Row 3: Sl1, k1, *k1, yo, [k1, p1] x7, k1, yo, k2; rep from * to last st, k1. 43 sts

Row 4: Sl1, *k2, p2, [k1, p1] x7, p1, k1; rep from * to last 2 sts, k2.

Row 5: Sl1, k1, *k3, yo, [k1, p1] x7, k1, yo,

k3; rep from * to last st, k1. 47 sts

Row 6: Sl1, *k3, p2, [k1, p1] x7, p1, k2; rep from * to last 2 sts, k2.

Row 7: Sl1, k1, *k3, yo, [k1, p1] x7, k1, yo, k4; rep from * to last st, k1. 51 sts

Row 8: Sl1, *k4, p2, [k1, p1] x7, p1, k3; rep from * to last 2 sts, k2.

Row 9: Sl1, k1, *k4, ssk x3, sl1-k2tog-pss0, k2tog x3, k5; rep from * to last st, k1. 35 sts

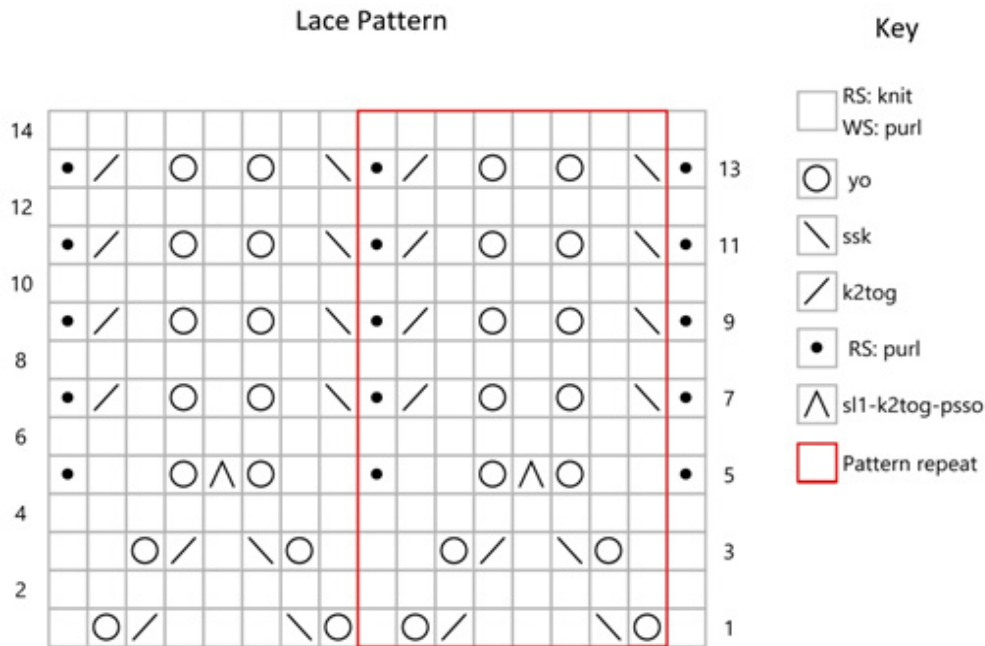
Row 10: Purl.

Rep Rows 1-10 once more.

Lace Pattern

Work Rows 1-14 of Lace Pattern chart, repeating until scarf measures approximately 35"/89 cm,

working all rows as follows: Sl1, work chart to last st working patt rep 4 times, k1.



Written Instructions:

NOTE: Selvedge sts are not shown on chart but are included in the directions below.

Row 1 (RS): Sl1, k1, *yo, ssk, k3, k2tog, yo, k1; rep from * to last st, k1.

Row 2 and all WS rows: Sl1, purl to last st, k1.

Row 3: Sl1, k1, *k1, yo, ssk, k1, k2tog, yo, k2; rep from * to last st, k1.

Row 5: Sl1, p1, *k2, yo, sl1-k2tog-ssso, yo, k2, p1; rep from * to last st, k1.

Rows 7, 9, 11, 13: Sl1, p1, ssk, [k1, yo] x2,

k1, k2tog, p1; rep from * to last st, k1.

Rep Rows 1-14 until scarf measures 35"/89 cm, ending with a WS row.

Border

Repeat Rows 1-10 of the Border Pattern twice (20 rows total), then BO all sts in knit.

Finishing

Weave in the ends and block as desired.

ABREVIATIONS

BO: bind off

CO: cast on

k: knit

k2tog: knit 2 stitches together

p: purl

patt: pattern

pss: pass slipped stitch over

rep: repeat

RS: right side

sl: slip

ssk: slip 2 stitches knitwise, insert point of left-hand needle through fronts of these 2 stitches and knit 2 together

st(s): stitch(es)

WS: wrong side

yo: yarn over